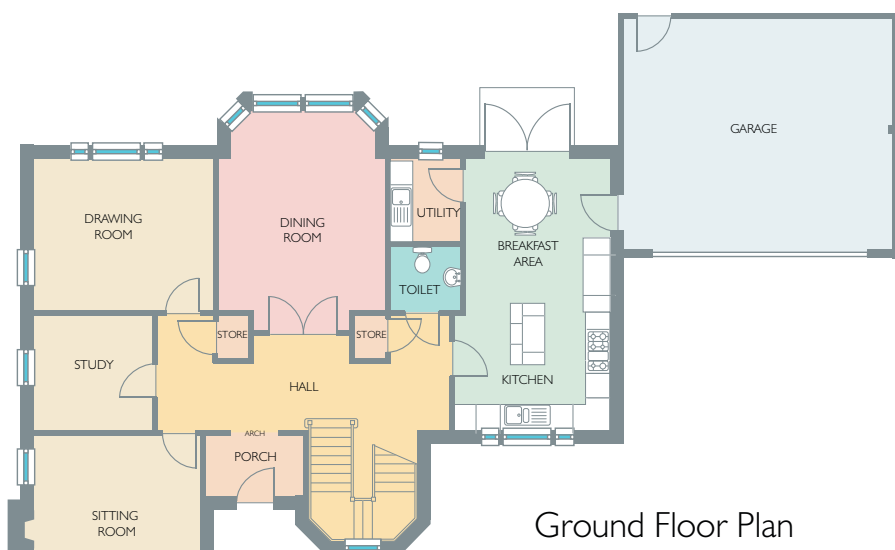




# YOUR DREAM HOME

## THE NESS



### GROUND FLOOR

Sitting Room	4070mm x 4200mm	13'4" x 13'9"
Sun Lounge	3200mm x 4200mm	10'6" x 13'9"
Study	2895mm x 3000mm	9'6" x 9'10"
Drawing Room	3800mm x 4500mm	12'6" x 14'9"
Dining Room	5000mm x 4200mm	16'5" x 13'9"
Kitchen/Breakfast	6800mm x 3615mm	22'4" x 11'10"
Utility	1800mm x 2100mm	5'11" x 6'11"



### FIRST FLOOR

Master Bedroom	4800mm x 4200mm	15'9" x 13'9"
Dressing Room	2100mm x 2450mm	6'11" x 8'0"
En suite	2895mm x 2700mm	9'6" x 8'10"
Bedroom 2	4300mm x 4250mm	14'1" x 13'11"
En suite	2400mm x 2300mm	7'10" x 7'7"
Bedroom 3	5490mm x 3800mm	18'0" x 12'6"
En suite	2100mm x 2100mm	6'11" x 6'11"
Bedroom 4	4000mm x 4300mm	13'1" x 14'1"
En suite	3000mm x 2100mm	9'10" x 6'11"
Games/Nursery	4000mm x 2500mm	13'1" x 8'3"

Room dimensions are taken from the furthest points in each room. Every care has been taken in the preparation of this leaflet, but the particulars do not form the basis of any contract. It should be noted that variation may occur on account of local regulations and conditions, and external finishes may vary from site to site.