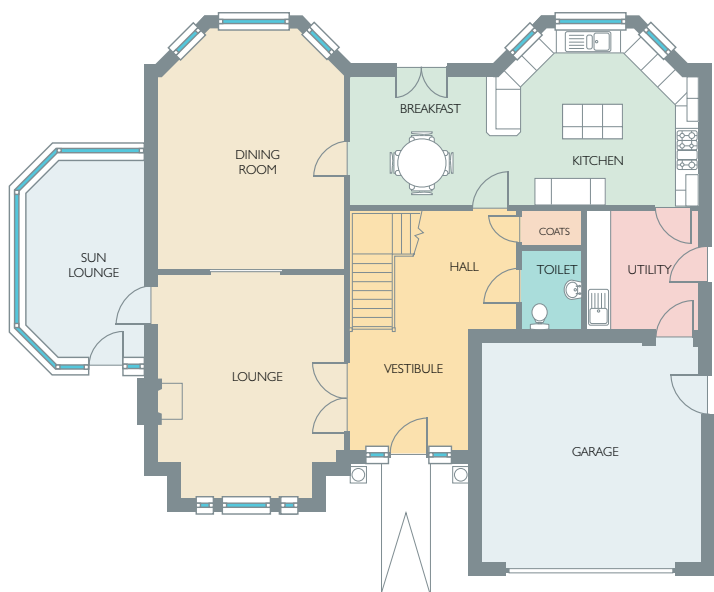




YOUR DREAM HOME THE RUTHVEN



Ground Floor Plan

GROUND FLOOR

Lounge	5500mm x 4700mm	18'1" x 15'5"
Sun Lounge	5000mm x 3100mm	16'5" x 10'2"
Dining Room	6000mm x 4700mm	19'8" x 15'5"
Breakfast	3200mm x 3200mm	10'6" x 10'6"
Kitchen	5200mm x 4400mm	17'1" x 14'5"
Utility	2800mm x 3000mm	9'2" x 9'10"



First Floor Plan

FIRST FLOOR

Master Bedroom	5400mm x 4100mm	17'9" x 13'5"
Dressing Room	1750mm x 3300mm	5'9" x 9'10"
En suite	2400mm x 3400mm	7'10" x 11'2"
Bedroom 2	3600mm x 4500mm	11'10" x 14'9"
Dressing Room	1750mm x 3300mm	5'9" x 9'10"
En suite	3300mm x 1800mm	9'10" x 5'11"
Bedroom 3	4300mm x 4750mm	14'1" x 15'7"
En suite	1800mm x 3000mm	5'11" x 9'10"
Bedroom 4	4400mm x 5050mm	14'5" x 16'7"
En suite	1800mm x 1700mm	5'11" x 5'7"
Dressing Room	1200mm x 1700mm	4'0" x 5'7"

Room dimensions are taken from the furthest points in each room. Every care has been taken in the preparation of this leaflet, but the particulars do not form the basis of any contract. It should be noted that variation may occur on account of local regulations and conditions, and external finishes may vary from site to site.